



Dedicated Education Unit: The Canterbury Model

Isabel Jamieson¹,
Deb Sims¹, Janine Hale², Michelle Casey², Rose Whittle¹

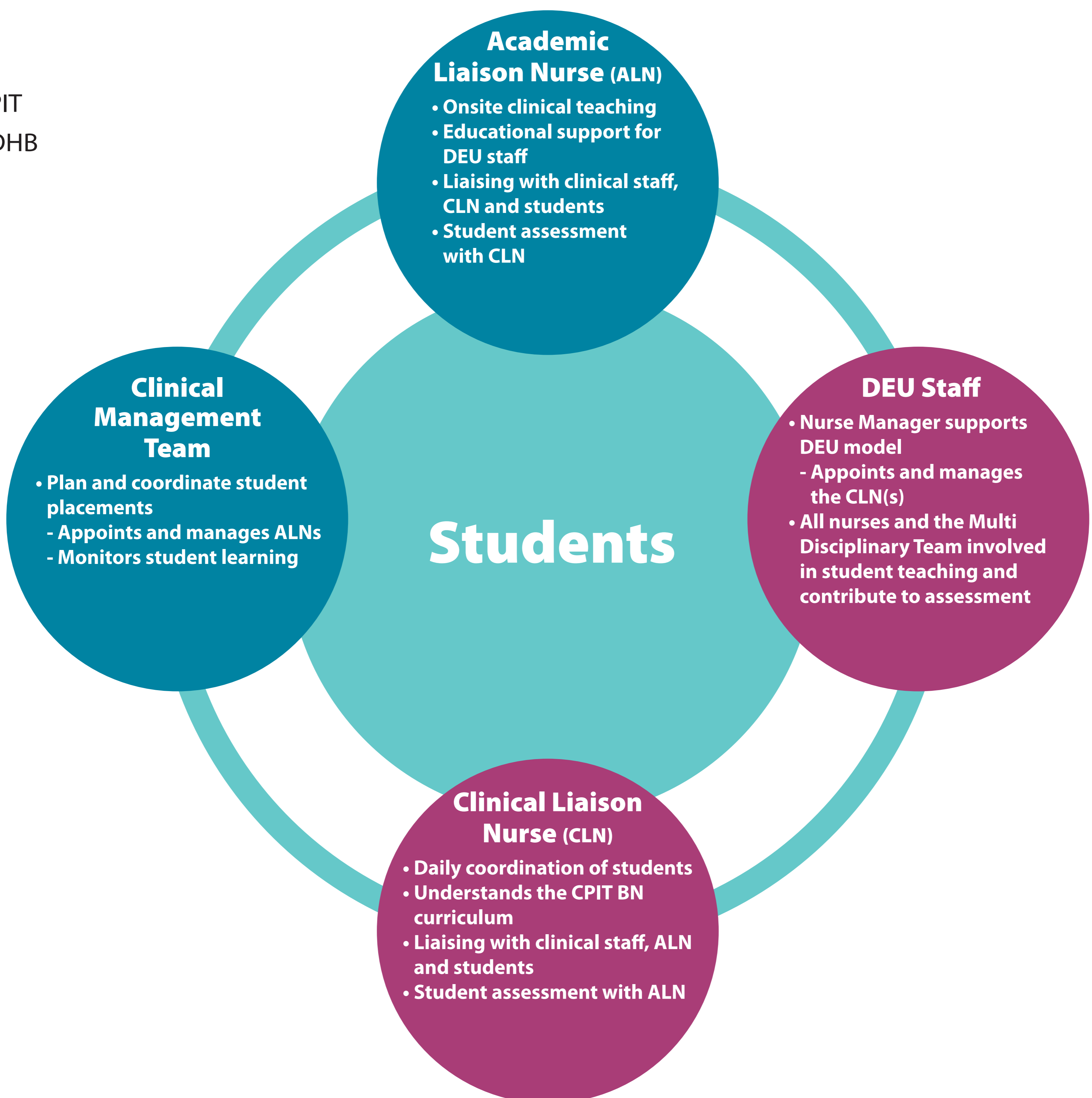
Supporting Clinical Learning[®]

Background

A collaborative research project was undertaken in 2007 by the Christchurch Polytechnic Institute of Technology (CPIT)¹ and Canterbury District Health Board (CDHB)² to pilot the **Dedicated Education Unit (DEU)** model because several factors were hindering the success of the one-on-one preceptorship model of clinical teaching and learning (Casey et al., 2008; Jamieson et al., 2008). The DEU is a collaborative model of clinical teaching and learning for undergraduate students of nursing that facilitates a closer working relationship between the education provider and the health service. The model is outlined below.

Key

- CPIT
- CDHB



References

- Casey, M., Hale, J., Jamieson, I., Sims, D., Whittle, R., & Kilkenny, T. (2008). Dedicated Education Units: A new way of supporting clinical learning. *Kai Tiaki Nursing New Zealand* 14(11), 24-25.
- Jamieson, I., Hale, J., Sims, D., Casey, M., Whittle, R., & Kilkenny, T. (2008). *Establishing Dedicated Education Units for undergraduate nursing students: Pilot project summation report*. Christchurch, New Zealand: CPIT Publishing Unit.



Supporting Clinical Learning[®]

Models of Clinical Teaching and Learning: A Comparison of Dedicated Education Units and Preceptorship

Michelle Casey¹,
Isabel Jamieson², Deb Sims², Janine Hale¹, Rose Whittle²

Background

A collaborative research project was undertaken in 2007 by the Canterbury District Health Board (CDHB)¹ and Christchurch Polytechnic Institute of Technology (CPIT)² to pilot the **Dedicated Education Unit (DEU)** model because several factors were hindering the one-on-one preceptorship model of clinical teaching and learning (Casey et al., 2008; Jamieson, et al., 2008). Following the success of the project the DEU model was recommended and accepted as the preferred model for Canterbury, New Zealand. The table below outlines the differences between the DEU and preceptorship models.

DEU Model	Preceptorship Model
A Clinical Liaison Nurse(s) (CLN), from the CDHB practice area, is appointed to the DEU	No dedicated on-site support person to coordinate student learning
A consistent Academic Liaison Nurse (ALN), from CPIT, is allocated to and becomes familiar with the DEU practice area	Inconsistent Clinical Lecturer (CL)
ALN and CLN responsible for student orientation (supernumerary time provided for CLN)	CL and preceptor responsible for student orientation
All DEU staff share the responsibility for facilitating student learning	Individual preceptors responsible for facilitating the students learning
Clinical assessment completed by CLN and ALN with staff input (supernumerary time provided for CLN)	Clinical assessment completed by the preceptor and CL
CLN and staff are provided with education on the BN curriculum and assessment process	Some CDHB staff unfamiliar with BN curriculum
Students are responsible for their own learning	Students are responsible for their own learning
Increased student numbers. Minimum of 6 per DEU	1-4 students per area
Clinical contact hours for the ALN are consolidated so that the ALN is able to spend increased time in the DEU to offer 'real time' support to students and DEU staff	CL allocated several students across the CDHB therefore clinical contact hours allocated to the CL spread across clinical areas
More students = more ALN support	
CLN coordinates students' learning on a day-to-day basis	
CLN is supported by the ALN/CPIT Course Leader	
CLN provides on-site, consistent and accessible support to students and staff	
Student peer teaching encouraged	
ALN is able to offer on-site teaching sessions/ research support to staff and students	

References

- Casey, M., Hale, J., Jamieson, I., Sims, D., Whittle, R., & Kilkenny, T. (2008). Dedicated Education Units: A new way of supporting clinical learning. *Kai Tiaki Nursing New Zealand* 14(11), 24-25.
- Jamieson, I., Hale, J., Sims, D., Casey, M., Whittle, R., & Kilkenny, T. (2008). *Establishing Dedicated Education Units for undergraduate nursing students: Pilot project summation report*. Christchurch, New Zealand: CPIT Publishing Unit.