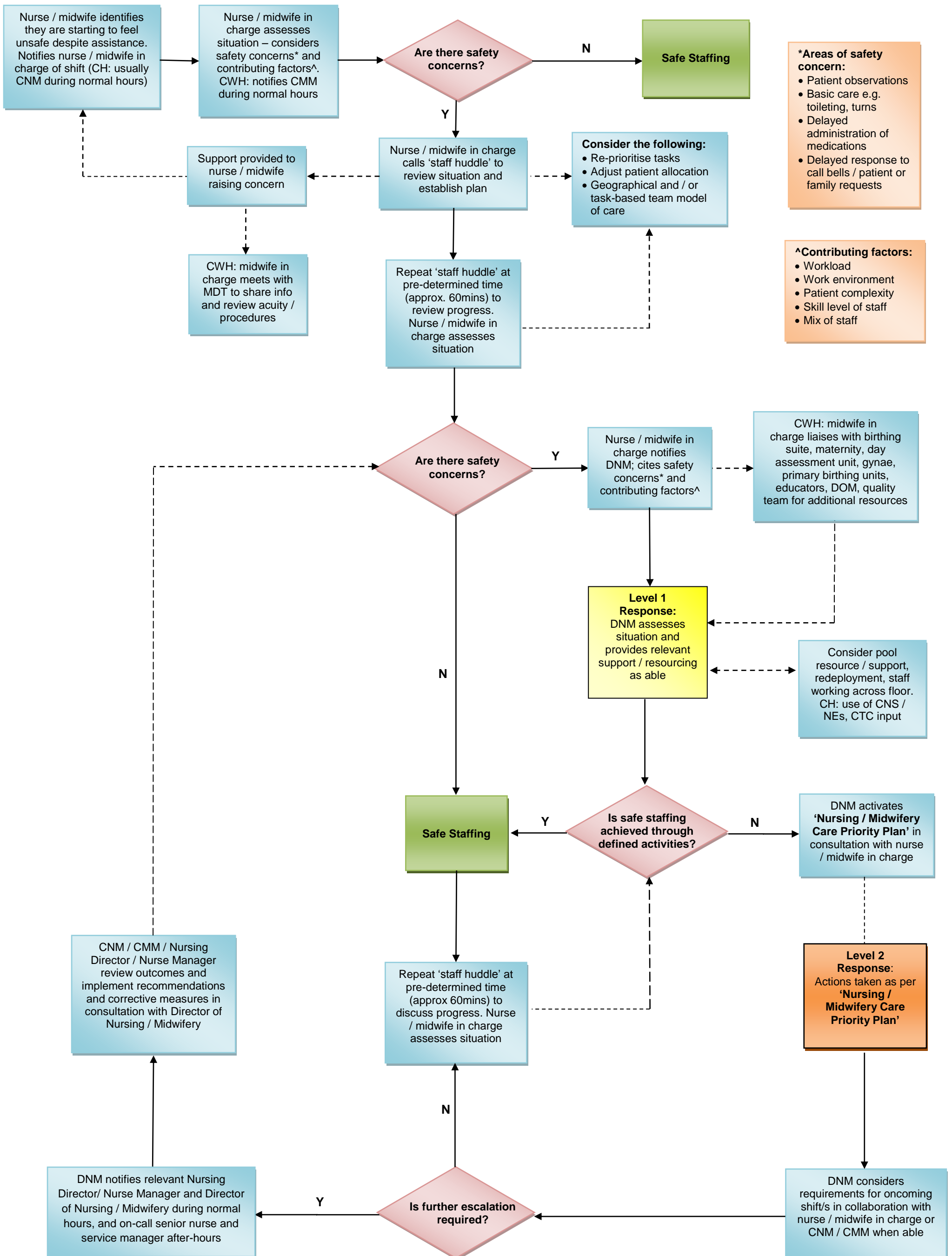


Safe Staffing Escalation Flowchart

Christchurch Hospital & Christchurch Women's Hospital



***Areas of safety concern:**

- Patient observations
- Basic care e.g. toileting, turns
- Delayed administration of medications
- Delayed response to call bells / patient or family requests

^Contributing factors:

- Workload
- Work environment
- Patient complexity
- Skill level of staff
- Mix of staff